

SUGGESTED ROUTE TO REACH THE ART HOTEL COMMERCianti

ATTENTION: In Bologna, like a lot of European cities, there are several areas partially or totally forbidden to traffic. In order to avoid to incur in penalties during the departure and the arrival at our hotel, you must follow the authorised itinerary that we have prepared for you making attention not to violate traffic laws. **If you have a navigation system, we suggest you to enter Via Alfredo Testoni n. 6, 40123 Bologna.** This is a street nearby our hotels, access point to the Limited Traffic Zone, better recognized by the navigator system rather than our proper address which is on a pedestrian area. **From Via Alfredo Testoni we kindly ask you to follow the instructions.**

- **Garage Commercianti:** You can reserve a space in our private garage. Garage service is available from 7.00 am to 10.00 pm. If you wish to use your car beyond that time, we kindly ask you to inform the Reception in advance so that the Staff can organize the service.

There in after, we give you the useful information in order to access the Hotel Commercianti Garage:

- Maximum Height: 2,60 m
- Maximum Width: 2,50 m
- Maximum vehicle length: 9 m
- Curve to enter in the Garage: 6 m

- **Public parking Roosevelt Square:** cars can be parked within blue lines buying at the Reception desk a 24 hours ticket at the rate of € 9,00; However, the parking spot can't be reserved and the parking is not guarded.

- **Car plate number:** Guests are kindly requested to communicate their car plate number to the Reception desk upon arrival for the access through the controlled traffic zone (ZTL). It will be our singular consideration to report it to the field office. It's important to provide the car plate number even if guests won't use our Garage. The permission enables only the transit through the itinerary provided by us to reach the hotel, it does not enable to stop, park or take any other routes.

You are not allowed to drive along Via Indipendenza, Rizzoli, Ugo Bassi, Archiginnasio, Piazza San Francesco, Via Antonio Bertoloni and on bus yellow lanes.

Entrances to be used to reach us:

- Via Marconi;
- Via San Felice;
- Via Sant'Isaia.

FROM A14 MOTORWAY: EXIT 7 (FAIR), towards the centre, via Stalingrado, railway station

- Continue along VIA STALINGRADO towards the CENTRE
- Turn RIGHT on to VIA ANGELO MASINI
- Continue along VIALE PIETRO PIETRAMELLARA
- Turn LEFT on to VIA GIOVANNI AMENDOLA



- At the roundabout, Piazza dei Martiri 1943-1945, take the 2nd exit, or continue STRAIGHT AHEAD: VIA GUGLIELMO MARCONI. Driving along VIA MARCONI, at the end of the street, at the intersection with traffic light, turn LEFT on to VIA UGO BASSI



- 15 metres from the ENTRANCE on to VIA UGO BASSI, turn on your RIGHT on to VIA ALFREDO TESTONI





- In to Via Testoni, at the first intersection at 100 metres, turn LEFT on to VIA PORTA NOVA, following the signs **HOTELS and GARAGE** (you will find it in front of you)



- Continue on VIA PORTA NOVA until the intersection with the Church of San Salvatore on the right and TURN RIGHT into Via Cesare Battisti





- Continue for about 100 meters and at the first intersection and TURN LEFT into VIA SANTA MARGHERITA



- Continue on VIA SANTA MARGHERITA for about 250 metres





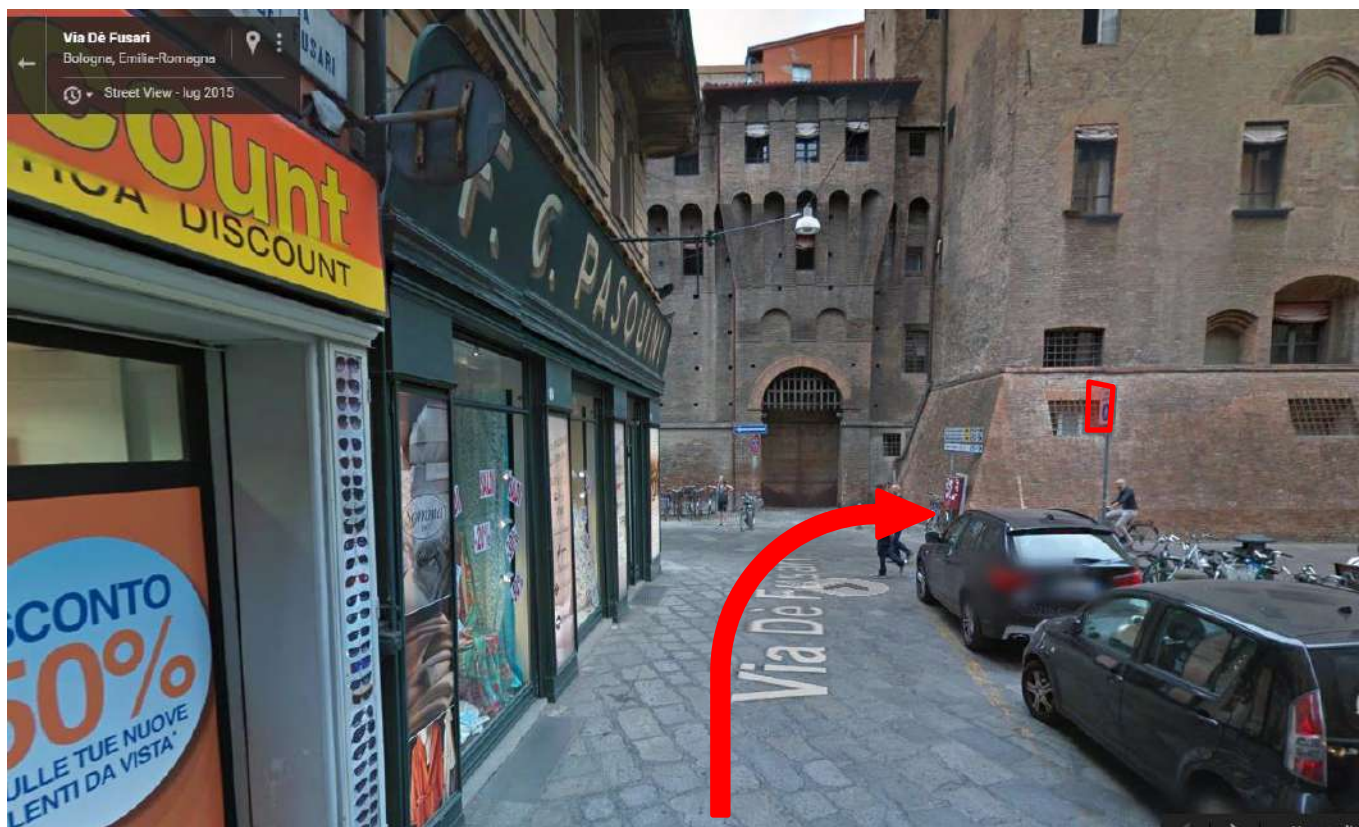
- At the end of Via Santa Margherita you will get to the intersection with VIA DE' FUSARI



- TURN LEFT into VIA DE' FUSARI



- Continue up to the END of VIA dei FUSARI, at the intersection you will find the Town Hall. Turn RIGHT entering the PEDESTRIAN ZONE where the transit is allowed for the Guests of Hotel Commercianti.



- You are now in a PEDESTRIAN ZONE, **please drive slowly**;
- To reach the **ART HOTEL COMMERCianti** continue along VIA IV NOVEMBRE, pass on the right a RED GAZEBO located on the corner of VIA D'AZEGLIO, and continue on to Piazza Maggiore





- Once arrived in Piazza Maggiore TURN ON the FIRST street on the RIGHT before the BASILICA of SAN PETRONIO, in between the located between the staircase of the BASILICA and the PALAZZO dei NOTAI





- You will be in VIA dei PIGNATTARI and down the street, at number 11, you will find the **ART HOTEL COMMERCianti** and our **PRIVATE GARAGE**

