

SUGGESTED ROUTE TO REACH THE ART HOTEL OROLOGIO

ATTENTION: In Bologna, like a lot of European cities, there are several areas partially or totally forbidden to traffic. In order to avoid to incur in penalties during the departure and the arrival at our hotel, you must follow the authorised itinerary that we have prepared for you making attention not to violate traffic laws. **If you have a navigation system, we suggest you to enter Via Alfredo Testoni n. 2, 40100 Bologna.** This is a street nearby our hotels, access point to the Limited Traffic Zone, better recognized by the navigator system rather than our proper address which is on a pedestrian area. **From Via Alfredo Testoni we kindly ask you to follow the instructions.**

Car plate number: Guests are kindly requested to communicate their car plate number to the Reception desk upon arrival for the access through the controlled traffic zone (ZTL). It will be our singular consideration to report it to the field office. It's important to provide the car plate number even if guests won't use our Garage. The permission enables only the transit through the itinerary provided by us to reach the hotel, it does not enable to stop, park or take any other routes.

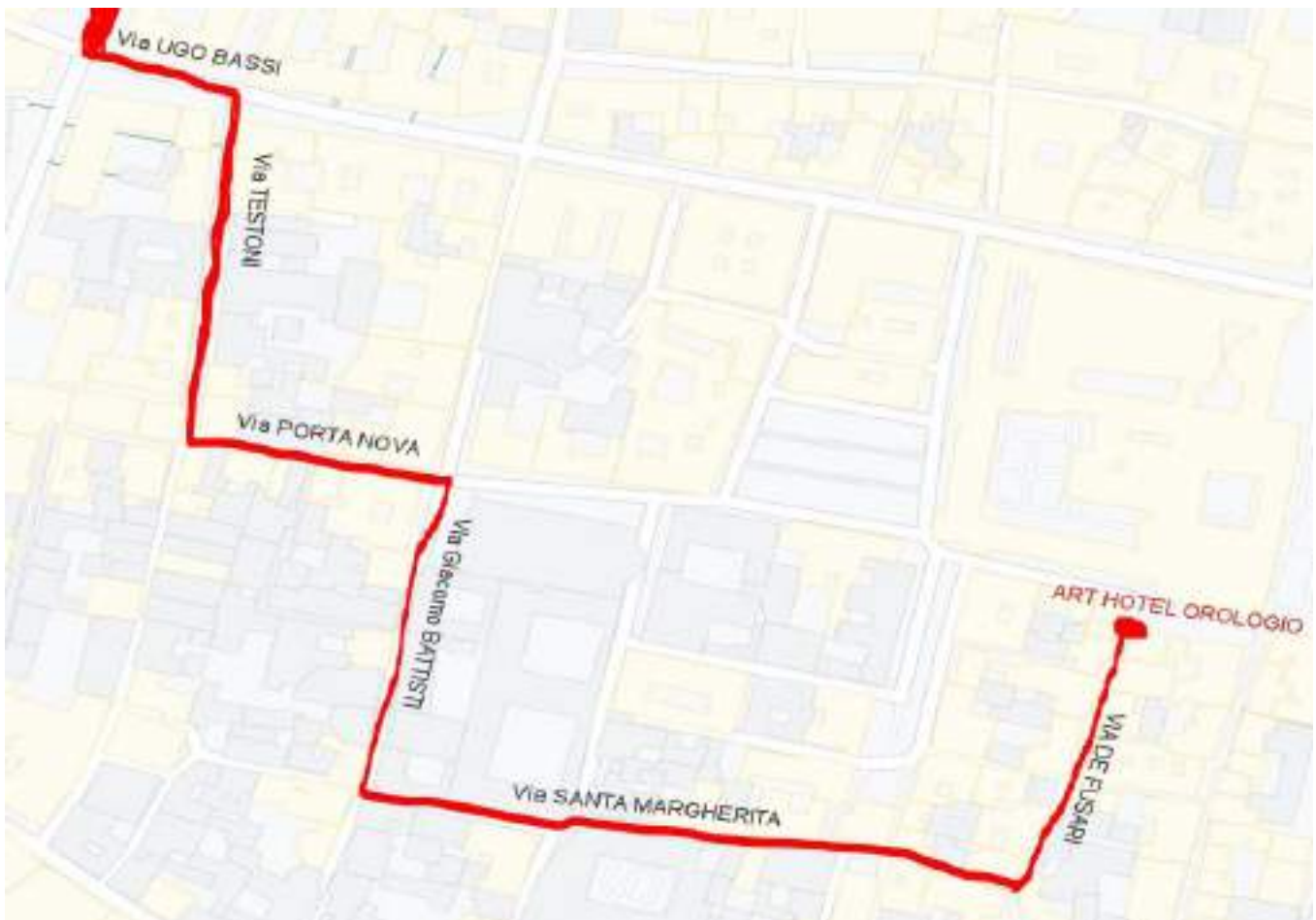
ATTENTION LTZ and ZONA T (Indipendenza, Rizzoli, Ugo Bassi):

Entrances to be used to access at the Art Hotel: Via Marconi, Via San Felice, Via Sant'Isaia.

You are not allowed to drive at any hour and day, even for hotel guests, along ZONA T (Via Indipendenza, Via Rizzoli, Via Ugo Bassi), Via Archiginnasio, Piazza San Francesco, Via del Pratello, Via delle Moline, Via Capo di Lucca, Via Antonio Bertoloni (University Area) and on bus yellow lanes.

Private Garage: you can book a parking space in one of private garages located in the historical center (from 170 meters away) a daily price from 30€. The service is on request and it depends on the garages availability, which will be previously communicated to you by the Reception.

Public square of Piazza Roosevelt (150 meters away): cars can be parked within blue lines buying at the Reception desk a 24 hours ticket at the rate of € 9,00. However, the parking spot can't be reserved and the parking is not guarded.



COMING FROM A1 MOTORWAY: EXIT 2 (BORGO PANIGALE), towards the CENTRE

- At the roundabout take VIALE PALMIRO TOGLIATTI
- Continue along Viale Palmiro Togliatti; at the roundabout LUCIANO ROMAGNOLI take the 2° exit on to VIALE Mohandas Karamchand GANDHI
- Go straight on Via Gandhi until when the street becomes VIA TOLMINO
- Continue along Via Tolmino until when, after the **TRAFFIC LIGHTS**, the road becomes Via Sabotino



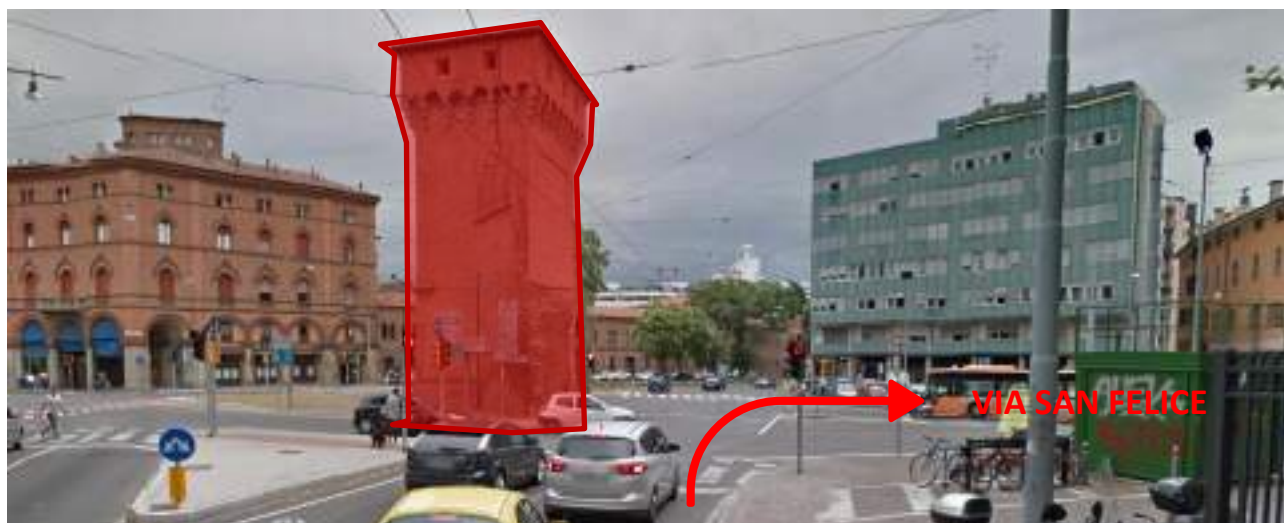
- At the end of VIA SABOTINO, take the LEFTHAND SIDE



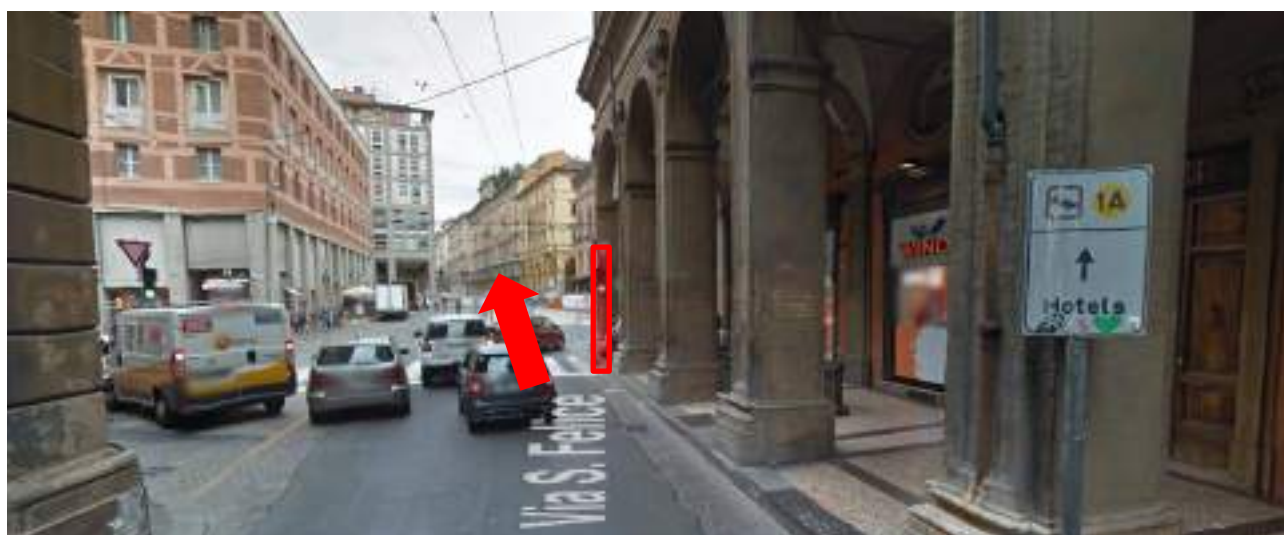
- At the **TRAFFIC LIGHT** turn LEFT on to VIALE GIOVANNI VICINI



- 100 metres, at **PORTA S. FELICE** turn on to VIA SAN FELICE



- Run along VIA SAN FELICE, until the intersection with the **TRAFFIC LIGHTS** Cross the intersection and take VIA UGO BASSI



- 15 metres from the ENTRANCE on to VIA UGO BASSI, turn on your RIGHT on to VIA ALFREDO TESTONI





- In to Via Testoni, at the first intersection at 100 metres, turn LEFT on to VIA PORTA NOVA, following the signs **HOTELS and GARAGE** (you will find it in front of you)



- Continue on VIA PORTA NOVA until the intersection with the Church of San Salvatore on the right and TURN RIGHT into Via Cesare Battisti





- Continue for about 100 meters and at the first intersection and TURN LEFT into VIA SANTA MARGHERITA



- Continue on VIA SANTA MARGHERITA for about 250 metres





- At the end of Via Santa Margherita you will get to the intersection with VIA DE' FUSARI, TURN LEFT into VIA DE' FUSARI



- Continue up to the END of VIA dei FUSARI, at the intersection you will find the Town Hall.





- you will find the **ART HOTEL OROLOGIO** on the far right



SUGGESTED ROUTE FOR EXITING THE ART HOTEL OROLOGIO



ATTENTION LTZ and ZONA T (Indipendenza, Rizzoli, Ugo Bassi):

Entrances to be used to access at the Art Hotel: Via Marconi, Via San Felice, Via Sant'Isaia.

You are not allowed to drive at any hour and day, even for hotel guests, along ZONA T (Via Indipendenza, Via Rizzoli, Via Ugo Bassi), Via Archiginnasio, Piazza San Francesco, Via del Pratello, Via delle Moline, Via Capo di Lucca, Via Antonio Bertoloni (University Area) and on bus yellow lanes.

Private Garage: you can book a parking space in one of private garages located in the historical center (from 170 meters away) a daily price from 30€. The service is on request and it depends on the garages availability, which will be previously communicated to you by the Reception.